

The New Wing

with all neces-
sary, towels and

Women. A Don
House and is
and a house
and Head
the governing
George Street

Infirmity fee,
the opening of
on or before
and \$200.00 on
Weekly rates
for periods not
instances stu-
dents required to pay

Women, 79 St.
The reserva-
tion charges to
the residence will
be \$18.00 for
XIII exami-
nations who with-

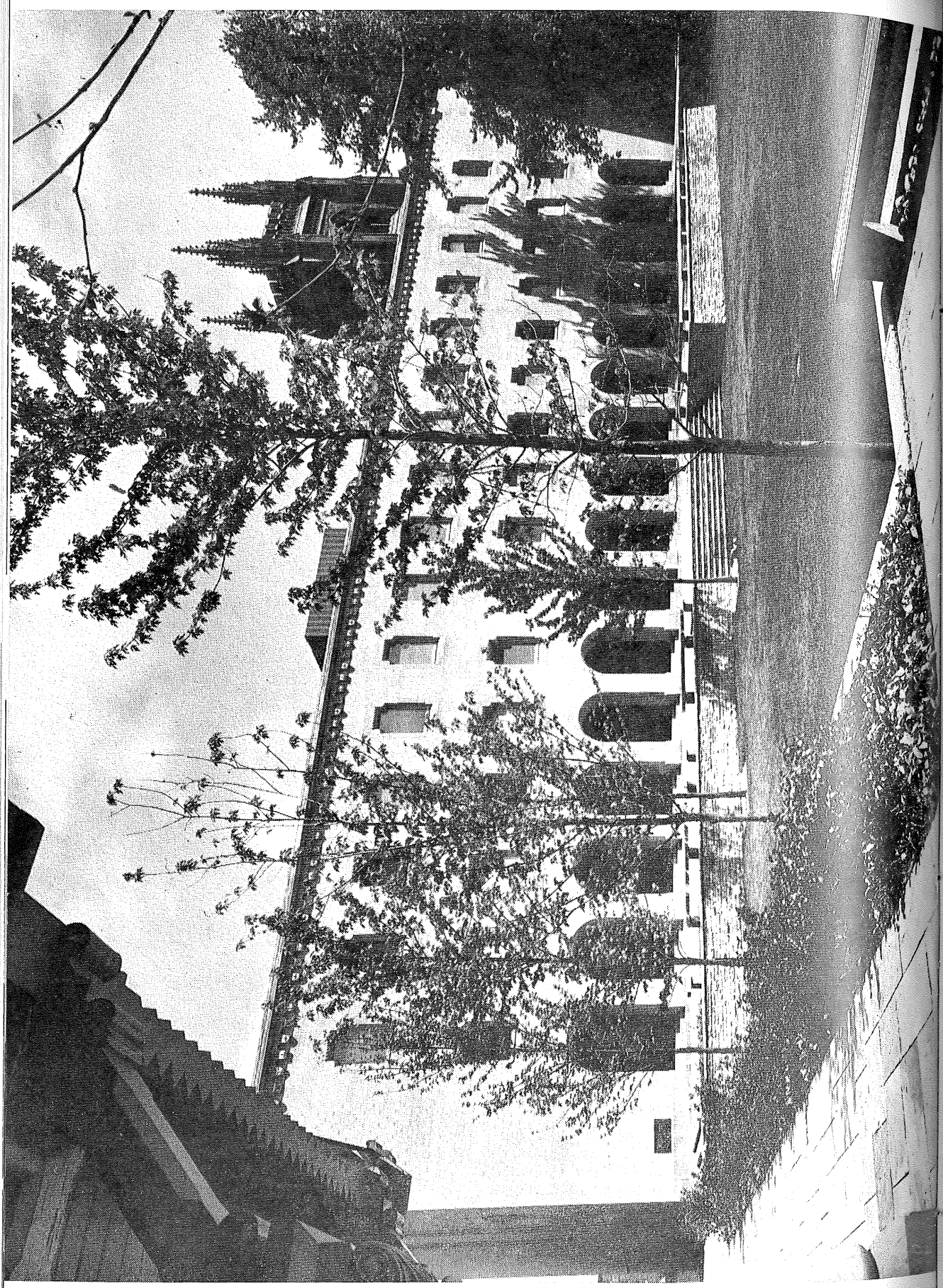
1

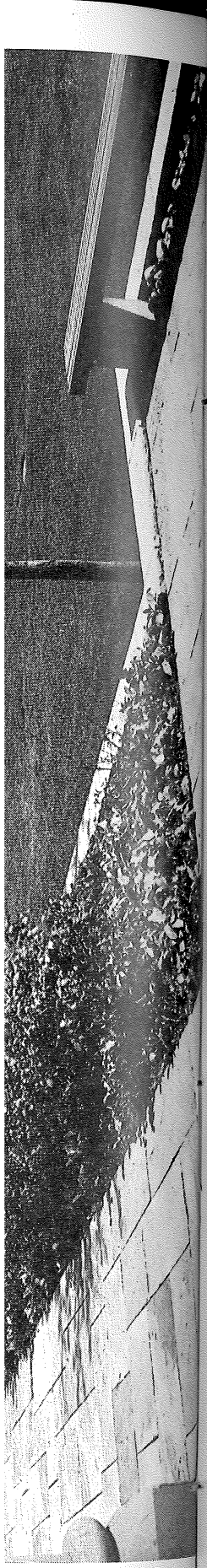
provides a centre
of student life.
The common
rooms of various
colours are
open on Satur-
days and
Sundays. All
the Union.

HALL
S
IN ONE OF
COMMON ROOMS.



THE EAST DOOR OF THE LAIDLAW LIBRARY WING





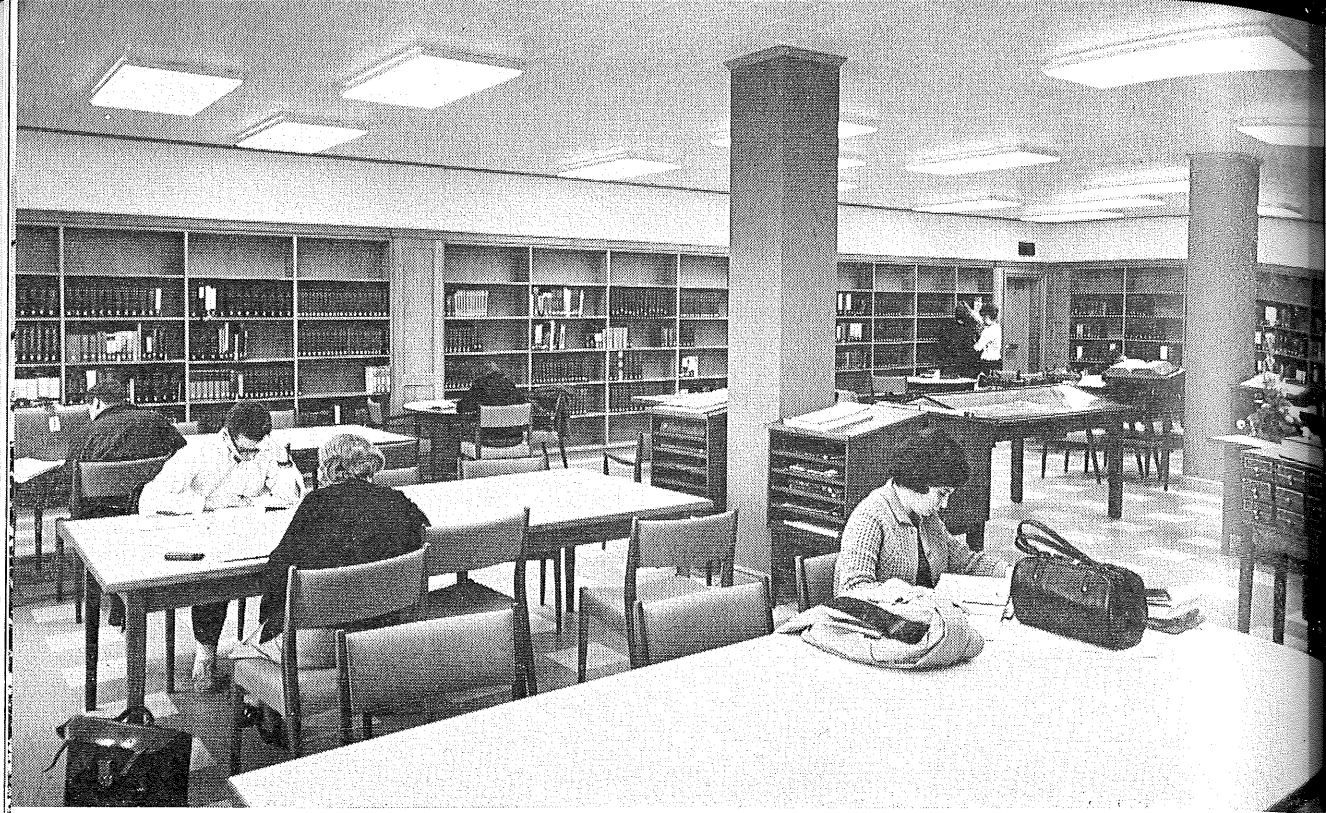
The New Library Building and Quadrangle

The fulfilment of the original plan for the College by the addition of a wing on the north side of the quadrangle has been made possible through the generosity of a member of the Laidlaw family. The architects, Mathers and Haldenby, have designed this addition to harmonize with the style of the older building. The exterior aspect, especially of the north face, is one of great solidity and dignity; the interior is very bright, modern and highly suitable for its various functions. The official opening ceremony, at which Principal LePan presided, was held on October 5, 1964.

The basement floor of the new wing is occupied by the Refectory, a combined common room and lunchroom similar in function to the old Junior Common Room, but with enlarged facilities to accommodate about 400 students.

The main and upper floors house the Laidlaw Library, planned to meet the principal needs of First and Second Year undergraduates in the College. A controlled-access book collection, which will ultimately comprise 40,000 volumes, and a reference room with a capacity of 4,000 volumes occupy the main floor. The upper floor is designed as reading-room space. The central area contains both large tables and individual desks. There are also a number of small reading-rooms for informal group study; these will accommodate typewriters, record-players and microfilm readers. Space has been set aside on the northeast corner landing of this floor for the College Archives: a collection of books, manuscripts, pictures and other objects associated with the history of the College. The mezzanine floor, above the Reading Room, provides seminar rooms and additional office space.

Michael Hough, University of Toronto landscape architect, has designed the new quadrangle on two levels. A paved walkway, supported by retaining walls and planted with flowering shrubs, runs along three sides of the area. On the north side, the walkway broadens out into a terrace, forming an extension of the new Library colonnade, with provision for outdoor seating and a stage for open-air play-productions. Two sets of steps on the north and south sides of the quadrangle lead down to a large lawn which will occupy the central space. Maples planted at this level against the retaining walls will increase the "colonnade" sense by providing shade over the walkway, contrasting with the sunny lawn area. The whole has been designed to create an atmosphere of quiet reflection, appropriate to an academic setting.



REFERENCE ROOM

READING ROOM





CATALOGUE ROOM AND CHARGING DESK

REFECTORY

